

COMBINE » RT490

VERSATILE

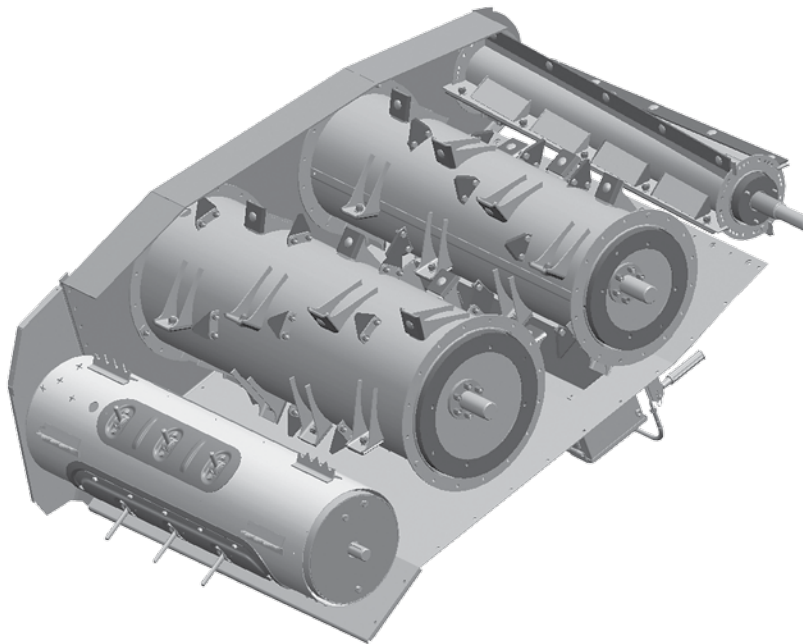


~ VERSATILE RT490 ~

The RT490 is a new 490 hp Class VIII combine from Versatile. True to the heritage of Versatile, the RT490 was designed to be rugged, reliable and simple to maintain and service.

At the core of the Versatile RT490 is the revolutionary Rotating Concave Rotary System. A 360° concave wraps around a large rotor and counter-rotates. The counter rotation of the concave in relation to the rotor creates an unsurpassed threshing and separating area. Three separate “pinch points” are created during each rotor revolution allowing the grain to be threshed three times in each rotation.





4-STAGE FEEDER HOUSE

The unique inclined chamber replaces the traditional feeder housing with four feeding beaters. It provides a considerable increase in processing stability and combine productivity. The crop is accelerated through the feeder housing as each beater increases in speed to prevent plugging and allow a uniform layer to enter the rotor.

STONE PROTECTION

The RT490 has a large stone trap to protect the combine's critical components. The rock trap can be cleaned out easily with the handle on the left hand side of the feeder housing.



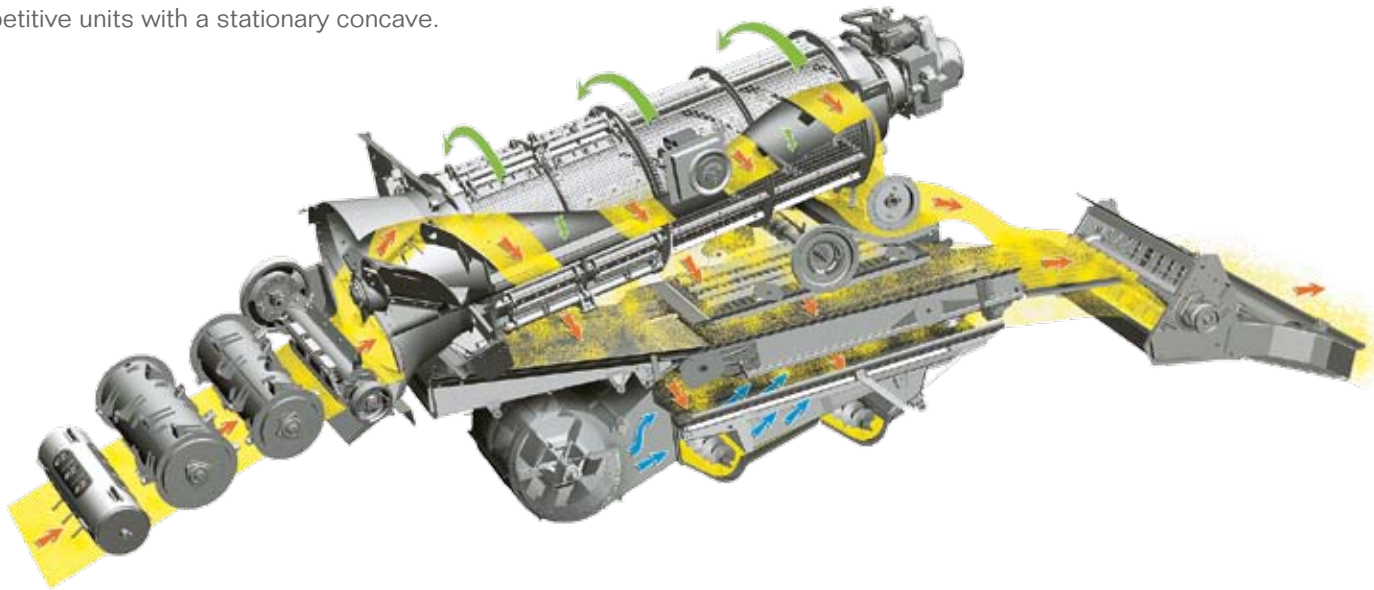


ROTATING CONCAVE ROTARY SYSTEM

The RT490 separates itself from traditional rotary combines by utilizing a Rotating Concave Rotary system. A 360° concave counter rotates to the rotor at 8 rpm.

The moving concave eliminates the traditional "dead zone" found in typical rotary systems. The grain is threshed three times in each rotation, which increases throughput and provides a cleaner grain sample. The moving concave self-cleaning.

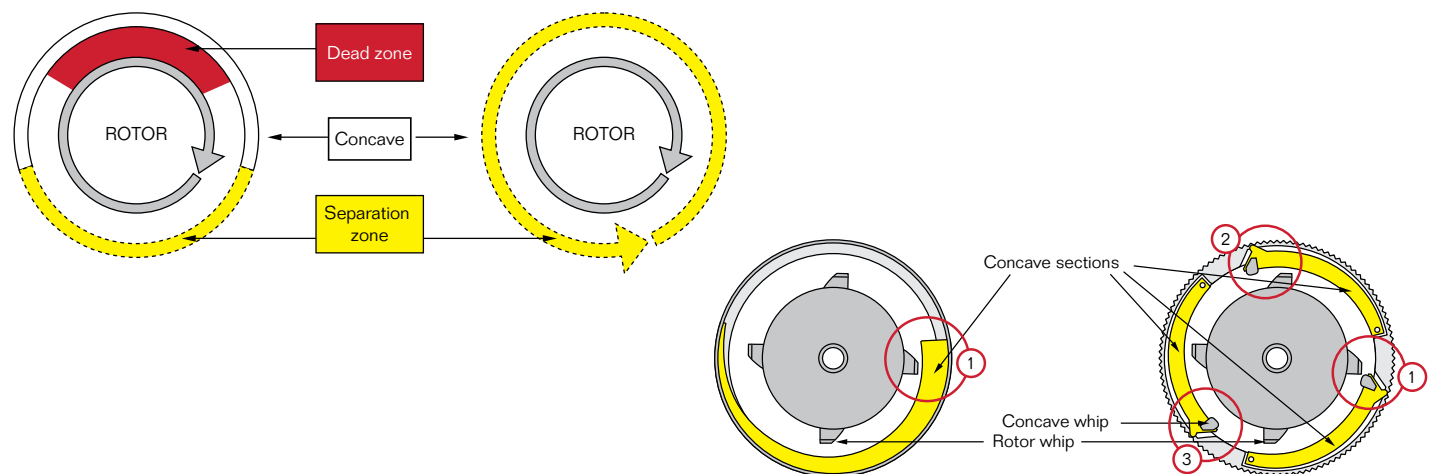
The rotor system allows the RT490 to be more productive in high-yield fields and in difficult crop conditions than competitive units with a stationary concave.





ROTATING CONCAVE ADVANTAGES

In rotary combines with a stationary concave the concave area is not fully utilized which reduces the productivity parameters and causes concave clogging in its upper section due to the “dead zone.” The concave on the Versatile RT490 combine, rotating in the direction opposite to the rotor, ensures that the entire threshing/separator area is utilized. Such rotation prevents the twisting into a strand and provides for concave self-cleaning.

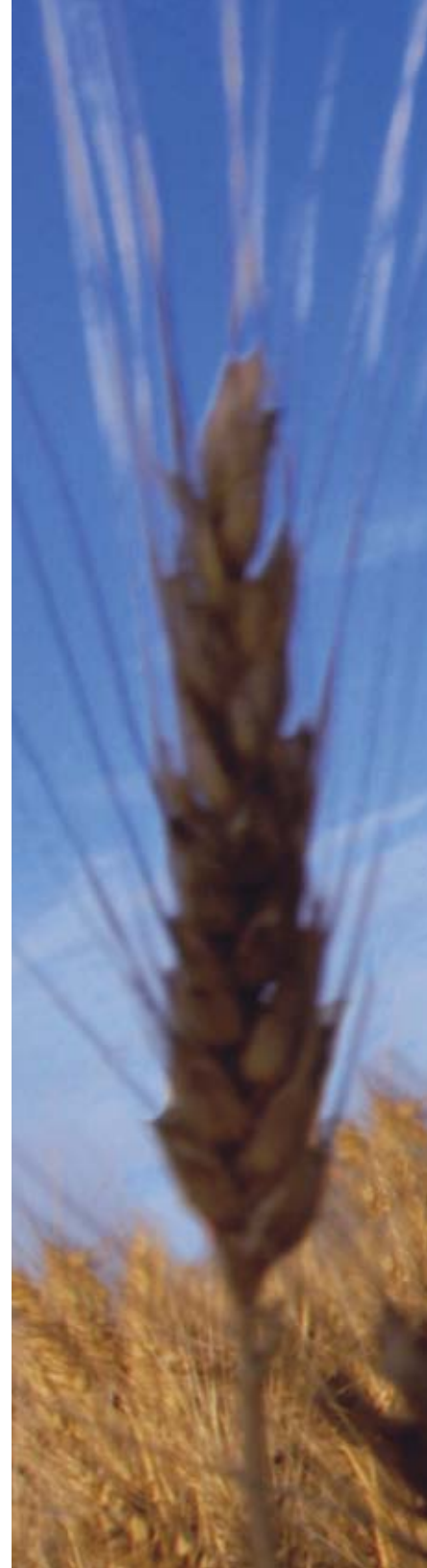
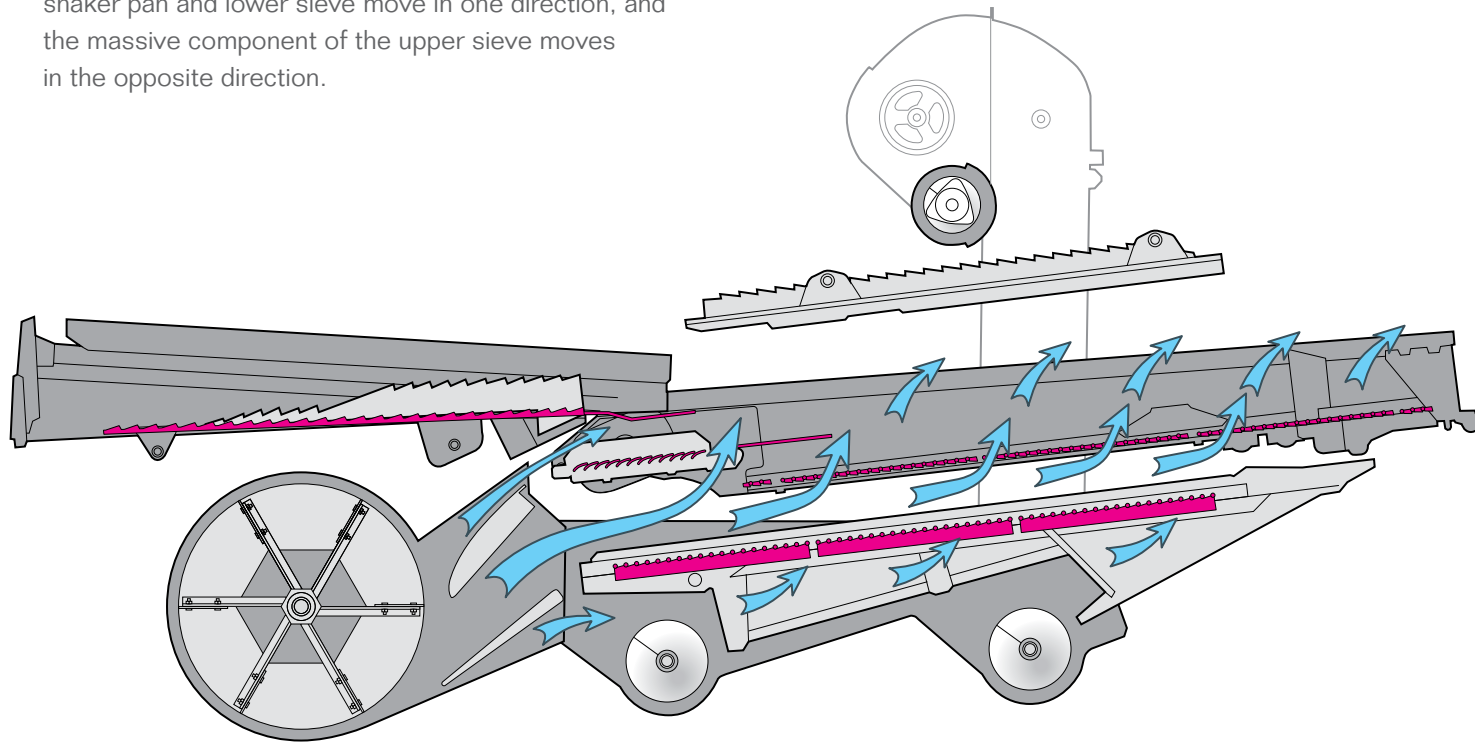


THREE-POINT THRESHING SYSTEM

The concave has three threshing sections allowing the threshing gap to be set in one cross-section. As a result, the crop is threshed three times during one rotor revolution, in contrast with the one-time threshing in traditional rotor designs. This design provides for operation with increased threshing gaps, high-quality threshing and grain separation over the entire diameter.

CLEANING

The cleaning system used in the Versatile RT490 combine is designed to accommodate the large rotor throughput capacity. The cleaning process is two-stage. The additional stage is provided in the form of an advance sieve. The shaker pan and lower sieve move in one direction, and the massive component of the upper sieve moves in the opposite direction.





GRAIN TANK

The Versatile RT490 has a 340 bu. tank capable of being unloaded in less than two minutes. Two horizontal augers set at different heights feed grain into the grain tank to prevent start overload. A large grain tank observation window and a cab platform window give the operator two view points into the grain tank. The grain tank roof can be controlled from the cab to switch from working mode to transport or storage.

CHOPPING AND SPREADING

The RT490 is equipped with an integrated straw chopper and spreader that performs two functions: shredding straw arriving from the rotor and chaff from the cleaning system. Straw and chaff are uniformly cut and spread or placed in a swath.



[1] Grain tank in closed position [2] Open / extended grain tank [3] Chopping position [4] Swath position



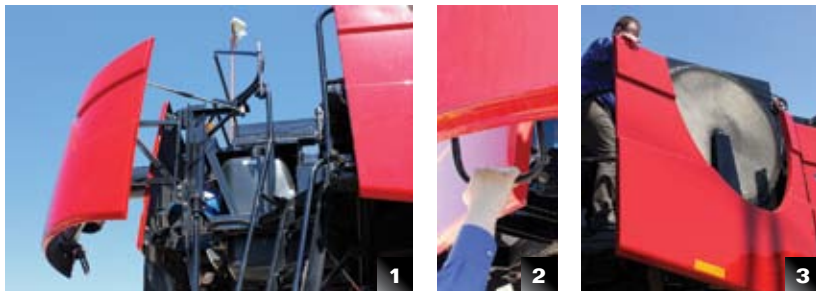
CHASSIS

The Versatile RT490 is designed to endure the difficult conditions that often exist during harvest. The increased ground clearance and tight turning radius ensure easy maneuverability, whether in the field or on the road. The German built drive axle is simple to maintain and very reliable.

An available American-made all-wheel drive steering axle incorporates powerful hydraulic motors to allow you to harvest in the harshest conditions.

SERVICE & MAINTENANCE

Versatile is known for building equipment that is easy to service and maintain and the RT490 lives up to that reputation. The simplicity and accessibility of the combine allows operators to quickly perform daily maintenance tasks and adjustments. Large access areas to the RT490's critical components and daily maintenance areas help reduce downtime. Belts and other wear components are changed in less time than it takes to service competitive units.



[1] Rear access area [2] Large easy to use latches [3] Cooling system service access [4] Engine compartment.



ENGINE

A Cummins 11.9L powers the RT490. The 490 hp unit provides ample power to harvest in any crop conditions. The QSX 11.9L engine incorporates the Cummins-patented Variable Geometry Turbocharger (VGT) to improve fuel economy and help control emissions.





CAB

The Versatile RT490 cab was designed for long operating days. A large glass area and panoramic windows create an excellent view of the header during harvesting. A standard training seat, cooler, air-conditioner and sun visor further the operator comfort on long working days.



	RT490
COMBINE CLASS	VIII
THRESHING	
Type	Rotary
Rotor diameter	30 in
Rotor speed range	250-1000 rpm
Concave angle	360°
Total threshing area	8371 sq. in
Sieve adjustment	From cab
Fan speed	350-1050 rpm
Grain loss monitor	Standard
CLEANING SYSTEM	
Type	2-Stage
Advance sieve area	729 sq. in (0.47 sq. m)
Lower sieve area	3,705 sq. in (2.39 sq. m)
Upper sieve area	3,628 sq. in (2.34 sq. m)
Total cleaning area	8,155 sq. in (5.2 sq. m)
Fan diameter	28.3 in (720 mm)
Finish thresher	Self-contained finish thresher w/spreading over return board
GRAIN TANK	
Grain tank capacity	340 bu.
Unloading speed	3.0 bu./s
ENGINE	
Engine type	Cummins QSX11.9
Aspiration	Turbocharged & air-to-air aftercooled
Displacement	11.9-liter
Horsepower	490 hp
TRANSMISSION	
Type	3-Speed Hydro
FUEL TANK	
Tank capacity	225 U.S. gal (852 L)
Transport weight	35,970 lb (16,316 kg)
DIMENSIONS	
Wheelbase	12.5 ft (3,817 mm)
Ground clearance	17 in (430 mm)
Turning radius	27 ft (8,200 mm)



Now you can purchase or lease your equipment with competitive rates through Versatile Finance. Versatile has partnered with one of the foremost leaders in agricultural financial services to provide attractive interest rates and fast acceptance to get you the equipment you need when you need it. Ask your dealer about the credit options available with Versatile Finance.



1260 Clarence Avenue » Winnipeg, Manitoba » Canada R3T 1T2
Telephone: 204.661.8711 » Fax: 204.654.2503 » Toll Free: 888.524.1003 » E-mail: info@versatile-ag.com » www.versatile-ag.com

©2012 Buhler Versatile Inc. All Rights Reserved. Printed in Canada. Ref: 0620125000LM P/N 89002313

Illustrations, photographs and specifications in this brochure are based on the latest information at the time of publication. Design and specification of equipment is subject to change without notice; please contact your local dealer for product information and availability. Products produced by other manufacturers featured in photography are not endorsed by Buhler Versatile Inc. and are intended for image reference only.