

SCRAPER SPECIAL TRACTORS

Models 450SS, 500SS, 550SS





GROUND BREAKING



Versatile Scraper Special tractors have been designed to enhance profitability by outworking the competition. Using high quality components, Versatile Scraper Special tractors focus on power, durability and reliability - because downtime is not an option. Engineered to be heavy-duty, Versatile Scraper Special tractors feature Cummins engines and industry proven transmissions. Comfortable for long working days, the Versatile line of Scraper Special tractors in both 4WD and DeltaTrack configurations are designed to pull more than just pans and are a valuable tool for any job site.

TABLE OF CONTENTS

- HQ Cab4
- Engine6
- Transmission6
- Frame and Axles.....8
- Auto Grease.....9
- DeltaTrack Scraper Tractor10
- Track System11
- Hydraulics12
- Hitch and Features13
- Service & Maintenance.....14
- Parts & Service » Warranty.....16
- Specifications18
- Finance.....20



**RUGGED & RELIABLE
RESTYLED**



DASH CONSOLE

The redesigned dash console is narrower than previous versions to increase forward visibility. The steering console has standard tilt and telescopic operation to provide additional operator comfort. A newly designed dash display simplifies information for improved readability.



Three indicator lights help you monitor your autogrease system to ensure the tractor is always well maintained.

STANDARD CAB OFFERING

The scraper special tractors take advantage of the class leading Versatile HQ Cab. With over 85.9 sq. ft. (7.98 sq. m) of viewable window glass the HQ Cab provides a panoramic view of your fields. A seat mounted right-hand console gives you fingertip control over the entire tractor to help reduce operator fatigue. A semi-active air-ride suspension seat is standard and the HQ Cab also offers a large training seat.

DELUXE CAB

The new Deluxe Cab is a high-end full-featured cab that provides the operator with every imaginable comfort for long working days. A semi-active air-ride suspension seat and the training seat are both standard in this configuration. In addition to the connectivity options available in the standard cab, the Deluxe Cab has a 110v AC power outlet and a 5-volt integrated USB port. A subwoofer is also standard to improve sound quality in the cab.

CAB ENVIRONMENT

Large multi-directional vents optimize comfort and help create an ideal cab environment. Climate control reduces window fogging and the pressurized cab prevents the accumulation of dust and dirt particles. Convenience features include four cup holders and coat hooks to keep the cab clean and organized.



RADIO

A conveniently located stereo and high quality sound system help make long days in the cab more enjoyable. Satellite radio is available.

OPERATOR SEAT

The operator seat has a 32° swivel range to maximize visibility when towing implements. Semi-active air-ride suspension and a heated seat are standard in the Deluxe Cab.

TRAINING SEAT

Turn the training seat into a workstation by folding down the backrest to reveal a surface ideal for a laptop computer. The Deluxe cab features an 110v AC power outlet to ensure that your work is never interrupted by a loss of battery power.



PROVEN POWERTRAIN

The Versatile Scraper Special tractors are powered by the Cummins QSX that features the latest in diesel engine technology. Cummins is the exclusive engine supplier across the entire range of Versatile tractors. Engineers from both companies worked together to ensure seamless integration of the engine with the transmission and electronics.

QSX15

The high horsepower range of Versatile Scraper Special Tractors features a QSX15 engine that provides excellent power and torque. The high displacement six-cylinder engine which uses EGR/DPF emissions technology offers higher torque rise ensuring it is never short on power and always up to task.

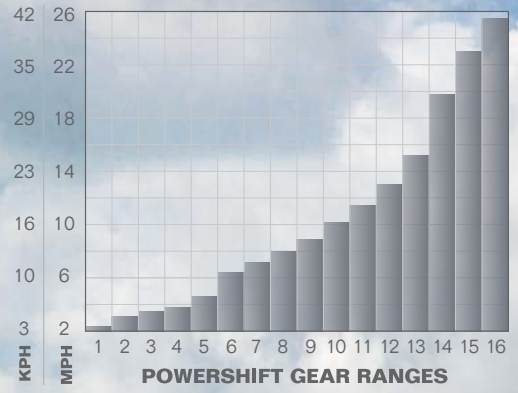
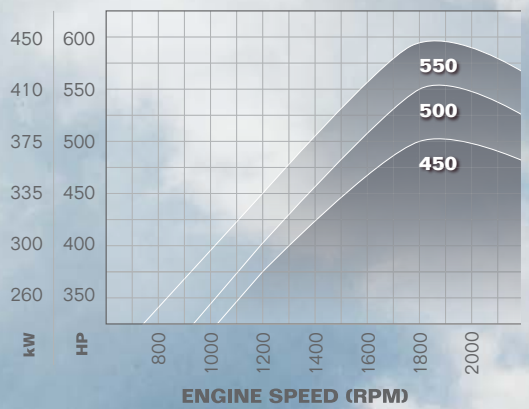
POWER GROWTH

The iT4 Cummins QSX engines give the Versatile Scraper Special an impressive 11% power bulge at 1800 RPM. The new engines are also capable of achieving up to a 51% torque rise, an increase of 25% over previous generations.

TRANSMISSION

The Versatile Scraper Special tractors feature 16 x 4 CAT® powershift transmissions. The smooth shifting dependable CAT transmission offers 23-25 mph (37-40 km/hr) road speeds and a large selection of working range gears for every application.





The iT4 Cummins QSX engines give the Versatile Scraper Special tractors an impressive 11% power bulge at 1800 RPM. The new engines are also capable of achieving up to a 51% torque rise, an increase of 25% over previous generations.

Shift effortlessly through gears using finger tip controls mounted on the seat's integrated control console. The transmission are programmable for auto-shifting and speed matching. An inching pedal provides superior control for hooking up to implements.



FRAME CONSTRUCTION

The frame is manufactured from thick high-grade steel plate to ensure structural integrity even under extreme conditions. The main bearing at the articulation point is oversized to enhance reliability. The drawbar pull point is immediately behind the articulation point which provides maximum pulling power when making tight turns.

OSCILLATION AND ARTICULATION

The flexibility provided by the subframe and drag link assembly permits up to 15° of oscillation on each side (30° total) as the tractor moves over uneven terrain. Large 3.5" (89 mm) steering cylinders articulate the tractor smoothly and quickly. A maximum articulation angle of 42° means a tight turnaround radius of less than 16' (4.9 m).

FUEL CAPACITY AND WEIGHT DISTRIBUTION

Two fuel tanks provide a total capacity of 400 U.S. gallons (1514 L). The two fuel tanks are connected with a crossover tube for convenient refueling on either side of the tractor. The tanks are located near the center of the tractor to maintain the front-to-rear weight distribution. As the fuel level drops, the front-to-rear weight ratio remains the same so weight distribution is not affected, regardless of fuel level.



OUTBOARD PLANETARY AXLES

All models feature a large, reliable heavy-duty planetary final drive to provide long service with heavily ballasted tractors and big implements. Large bearings support the planetary hubs on the axle housings. They are built with new extra heavy-duty axle tubes and planetaries capable of standing up to heavy weights and capable of handling increased bending loads associated with wide dual or triple wheel options.

Outboard planetary axles deliver all available horsepower through a large, precision machined floating sun gear. The planetary hubs are suspended on large diameter bearings mounted directly to the axle tubes. The load is supported by the axle housing assembly and not by the drive train components. All Versatile Scraper Special tractors feature reliable final drives that deliver horsepower where it counts; at the drawbar.

AXLE MAINTENANCE

The planetary axles remain on the tractor during routine maintenance, limiting downtime. Daily inspections are easy with a quick visual check of the axle oil level indicators. The gears can also be reversed to extend the wear life.

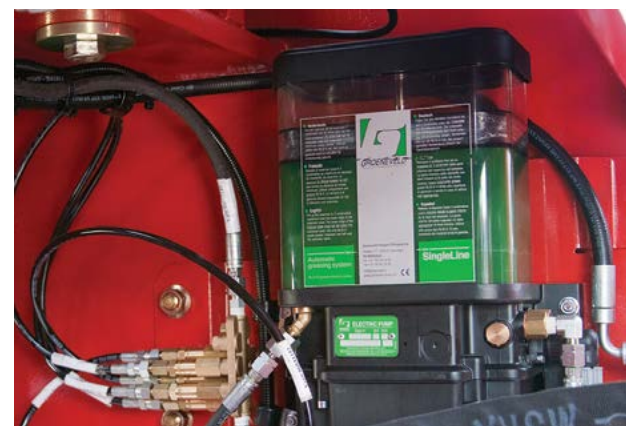




Versatile Scraper Special tractors come with a variety of features and options to make operation easier and more convenient.

AUTO GREASE

Optional on the Versatile Scraper Special Tractors is an auto greasing system. This system is located on the left side of the tractor near the articulation point. This electronically controlled unit can be set to grease in half hour intervals from 30 minutes up to five hours. The auto-greasing systems reduces maintenance time. The ability to grease during operation results in the best possible grease distribution across the bearing surface; this results in reduce component wear for moving parts and creates an effective barrier against moisture and dirt. The automatic greasing systems reduces downtime and maintenance costs.



DELTA TRACK

UNDERCARRIAGE SYSTEM

Developed in partnership with Camoplast, the Versatile DeltaTrack Scraper Special tractor is the most advanced undercarriage in the industry and was designed for longevity of the system and extended track life. The DeltaTrack offers superior torque transfer and excellent serviceability.

UNDERCARRIAGE MOUNTING

The Versatile DeltaTrack Scraper Special tractor has an integrated axle mounting system and reinforced connection to the frame of the tractor. The frame absorbs stress from each track to increase track system life and reduce maintenance requirements.

WEIGHT DISTRIBUTION

The steel saddle fuel tanks help the Versatile DeltaTrack Scraper Special tractor maintain an even 50/50 weight distribution front to rear regardless of fuel level. The tanks are mounted as to not affect the front to rear weight ratio.



The Versatile DeltaTrack Scraper Special tractor is a fully integrated purpose-built four track system from Versatile. Available in three models 450DTS, 500DTS and 550DTS, the DeltaTrack scraper special exceeds the performance and durability of existing track systems. The track systems uses the proven Versatile outboard planetary system to maximize power to the ground. Four independent tracks maintain balance and provide constant contact with the ground. Available in 30" 5500 series tracks or the optional 30" 6500 series heavy-duty track.

TRACK SYSTEM

The Versatile DeltaTrack Scraper Special tractor uses a positive drive system to reduced wear, friction and heat. Track slippage is eliminated by interlocking track lugs into the drive wheel. The DeltaTrack keeps 7 lugs engaged with the drive wheel at all times to eliminate slippage between the track and drive wheel. The DeltaTrack uses the largest drive lugs (8-1/2" (216 mm)) in the industry to maximize operating life.

IDLER WHEELS

The large idler wheels used on the Versatile DeltaTrack Scraper Special tractor improve the approach angle to reduce the risk of "submarining" in muddy conditions. The large idler wheels and track angle help reduce the tracks horsepower requirements.

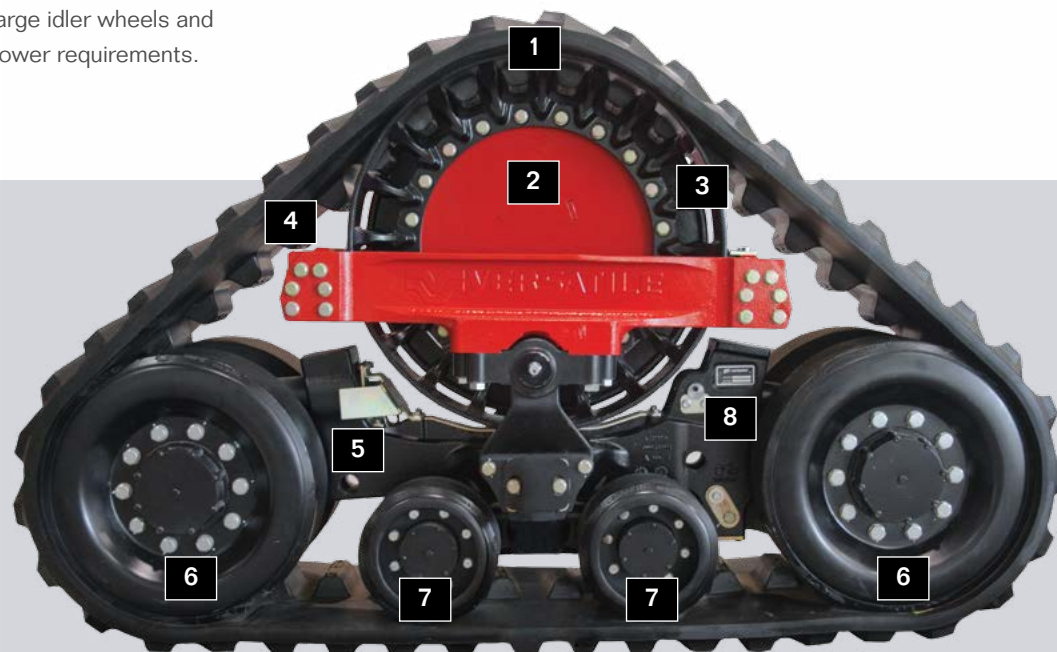
DRIVE SPROCKET

A large 80.7° single piece cast drive sprocket provides a larger wrap angle than competitive track units to help increase track life.

MIDROLLERS

The large midrollers on the Versatile DeltaTrack Scraper Special tractor system are not directly inline with axle or drive system components to improve the ride and service life of the tractor. Polyurethane coating dramatically reduces midroller wear and maintenance requirements compared to competitive rubber midrollers.

- [1] Driver Wrap
- [2] Outboard Planetary Drive
- [3] Drive Wheel
- [4] Drive Lug
- [5] Track Frame
- [6] Idler
- [7] Midroller
- [8] Tensioner





**BUILT TO HANDLE THE
TOUGHEST JOBS**

Modern implements require more hydraulic capacity to operate efficiently and the hydraulic system on Versatile Scraper Special tractors has been developed to meet those demands.

HYDRAULICS

The rigorous demands of scraper work require a reliable hydraulic system. The Versatile Scraper Special tractor is available with six hydraulic circuits and hi-flow hydraulic with a flow rate of 106 GPM (401 L/min). Electro-hydraulics are ergonomically designed for both comfort and convenience and allow for finger-tip operation of hydraulic functions.

HITCH OPTIONS

Versatile Scraper Special tractors have a variety of available hitch options to match industry standard pans. Tractors can be ordered from factory with Miskin, Reynolds and K-Tec hitches.

TOW CABLE

As standard equipment a tightly braided steel tow cable is securely mounted just behind the articulation point and extends all the way to the

front weight kit. Simply unhook the cable from the weights, attach to another machine and get out of any situation with ease.

WORKLIGHTS

For low-light working conditions, Versatile Scraper Special tractors are equipped with fourteen standard worklights mounted on the grille, front fenders, rear fenders and cab. To maximize visibility an optional HID lighting package is available. These lights provide up to ten times more light than conventional headlights.

DIFFERENTIAL LOCK

Available as an option, Versatile Scraper Special tractors feature a hydraulically operated differential lock which can be engaged when additional traction is required. Included is a steering angle sensor that turns off the differential lock when steering occurs at an angle of 10° to protect the driveline.

1. Tow cable is attached at a central pulling point to reduce stress on the frame.

2. Front mounted cable pull-point for easy access.

3. 6 hydraulic valves to meet the demands of modern attachments.

4. Miskin, Reynolds, and K-Tec hitch options.



SERVICE & MAINTENANCE

There are never enough hours in the day and every minute counts. That's why all Versatile tractors are designed with easy serviceability in mind. Routine service can extend the life of your tractor, minimize downtime and lower your operating costs.

DAILY MAINTENANCE

Daily maintenance is made effortless with side shields that open up and out of the way to allow access to fill points and dipsticks. Fluid checks are easy with conveniently located sight gauges. A swing-out assembly on the front grille and radiator expose the hydraulic and transmission oil coolers, air conditioning condenser, fuel cooler, and charge air cooler for fast cleaning.

AXLE SERVICING

The Versatile outboard planetary axle system is known for its ease of service. Planetary axle covers can be removed from the tractor without remov-

ing the axles and tires, limiting the amount of time needed for routine maintenance. Daily inspections are easy with a quick visual check of the axle oil level sight gauges.

FUELING

Refueling can easily be accomplished from either side of the tractor. A crossover tube allows both tanks to be filled quickly and with a capacity of 400 U.S. gallons (1514 L), 450 U.S. gallons (1800 L) on the DeltaTrack models, you'll have many hours on the job site before stopping for fuel.





GRILLE ACCESS

The front grille swings open to provide ground level service access to the condenser/cooler package. The cooler and condenser package swings open for service access. A reversible fan is optional on all models to increase efficiency and provide quick cleanout.

The batteries are also located behind the grille at ground level and a shut off switch is standard for safety, winter storage and to prevent against theft.

Steel ballast is mounted under the front of the tractor improving service access, visibility and reducing storage size.

[1] The air filter is easily accessible from ground level. [2] Open the right-hand side hood to check belt tension. [3] Fueling can be done on either side of the tractor by way of a crossover tube. [4] Check engine oil and sight gauges from ground level.

OWNERSHIP BENEFITS

Investing in equipment for your operation is an important decision and a long-term commitment. The Versatile 2-year / 2000-hour powertrain warranty ensures an excellent ownership experience. Your Versatile dealer has access to our dealer service support system, including a wide base of knowledge on current and past Versatile models and expansive parts inventory.



PARTS & SERVICE

Versatile dealers have access to an extensive parts supply that is well stocked with the parts for routine scheduled maintenance. Versatile maintains an extensive parts supply for tractors, more than 20 years old in some cases. Your Versatile dealer has factory-trained technicians that can handle everything from routine scheduled maintenance to major service and overhauls.

WARRANTY » 4WD MODELS 450SS-550SS

ORIGINAL PARTS AND COMPONENTS - 2-YEAR/2000 HOUR

All Versatile manufactured original parts and components will be repaired or replaced as covered by the warranty if they are not free from defects in materials and workmanship.

WARRANTY » DELTATRACK MODELS 450DTS-550DTS

ORIGINAL PARTS AND COMPONENTS - 2-YEAR/2000 HOUR

All Versatile manufactured original parts and components will be repaired or replaced as covered by the warranty if they are not free from defects in materials and workmanship.

TRACK - 2-YEAR/1250 HOUR

Track warranty is assessed on a prorated basis for 2 years or 1250 hours.

	450SS	500SS	550SS
ENGINE			
Engine type	Cummins QSX15	Cummins QSX15	Cummins QSX15
Aspiration	Turbocharged & air-to-air aftercooled	Turbocharged & air-to-air aftercooled	Turbocharged & air-to-air aftercooled
Displacement	15-liter	15-liter	15-liter
Horsepower	450 hp (336 kW)	500 hp (373 kW)	550 hp (410 kW)
Power bulge	11% @ 1800 RPM	10% @ 1800 RPM	7% @ 1800 RPM
Peak horsepower	500 hp (373 kW)	550 hp (410 kW)	591 hp (366 kW)
Torque rise	51% @ 1400 RPM	48% @ 1400 RPM	49% @ 1400 RPM
Peak torque	1700 lb-ft (2305 N•m)	1850 lb-ft (2508 N•m)	2050 lb-ft (2779 N•m)
FUEL SYSTEM			
Capacity	400 U.S. gal (1514 L)	400 U.S. gal (1514 L)	400 U.S. gal (1514 L)
Filter	Engine mounted w/water separator	Engine mounted w/water separator	Engine mounted w/water separator
TRANSMISSION			
Powershift transmission	CAT 16 x 4 - 25 mph (40 km/hr) road speed	CAT 16 x 4 - 25 mph (40 km/hr) road speed	CAT 16 x 4 - 25 mph (40 km/hr) road speed
AXLES			
Versatile Outboard Planetary Axles	Heavy-duty	Heavy-duty	Heavy-duty
Differential Lock	Optional	Optional	Optional
Brakes	Dual dry caliper	Dual dry caliper	Dual dry caliper
Wheelbase	154" (3900 mm)	154" (3900 mm)	154" (3900 mm)
HYDRAULICS			
Hydraulic type	Closed Center Load Sensing System	Closed Center Load Sensing System	Closed Center Load Sensing System
High-flow hydraulic system	106 GPM (401 L/min)	106 GPM (401 L/min)	106 GPM (401 L/min)
Hydraulic remotes	6 standard	6 standard	6 standard
Maximum system pressure	2900 PSI (197 bar)	2900 PSI (197 bar)	2900 PSI (197 bar)
ELECTRICAL SYSTEM			
Alternator	12V - 200 amps	12V - 200 amps	12V - 200 amps
Batteries	3-12V, 950 CCA ea.	3-12V, 950 CCA ea.	3-12V, 950 CCA ea.
HID lighting / Power mirrors	Optional / Optional	Optional / Optional	Optional / Optional
Battery shut-off switch	Standard	Standard	Standard
DRAWBAR			
Hitch options	Miskin / Reynolds / K-Tec	Miskin / Reynolds / K-Tec	Miskin / Reynolds / K-Tec
Tow cable	Standard	Standard	Standard
CAB			
Volume	175.5 cu. ft. (4.97 cu. m)	175.5 cu. ft. (4.97 cu. m)	175.5 cu. ft. (4.97 cu. m)
Glass	85.9 sq. ft. (7.98 sq. m)	85.9 sq. ft. (8 sq. m)	85.9 sq. ft. (8 sq. m)
WEIGHTS			
Base tractor weight*	42,000 lb (19,050 kg)	42,000 lb (19,050 kg)	42,000 lb (19,050 kg)
Maximum operating weight	45,000 lb (20,411 kg)	50,000 lb (22,680 kg)	55,000 lb (24,948 kg)

*A base tractor is considered to have 850/60R38 singles, front ballast, no fuel, no operator, no special added equipment.

	450DTS	500DTS	550DTS
ENGINE			
Engine type	Cummins QSX15	Cummins QSX15	Cummins QSX15
Aspiration	Turbocharged & air-to-air aftercooled	Turbocharged & air-to-air aftercooled	Turbocharged & air-to-air aftercooled
Displacement	15-liter	15-liter	15-liter
Horsepower	450 hp (336 kW)	500 hp (373 kW)	550 hp (410 kW)
Power bulge	11% @ 1800 RPM	10% @ 1800 RPM	7% @ 1800 RPM
Peak horsepower	500 hp (373 kW)	550 hp (410 kW)	591 hp (366 kW)
Torque rise	51% @ 1400 RPM	48% @ 1400 RPM	49% @ 1400 RPM
Peak torque	1700 lb-ft (2305 N•m)	1850 lb-ft (2508 N•m)	2050 lb-ft (2779 N•m)
FUEL SYSTEM			
Capacity	475 U.S. gal (1800 L)	475 U.S. gal (1800 L)	475 U.S. gal (1800 L)
Filter	Engine mounted w/water separator	Engine mounted w/water separator	Engine mounted w/water separator
TRANSMISSION			
Powershift transmission	CAT 16 x 4 - 22 mph (35 km/hr) road speed	CAT 16 x 4 - 22 mph (35 km/hr) road speed	CAT 16 x 4 - 22 mph (35 km/hr) road speed
AXLES			
Versatile Outboard Planetary Axles	Heavy-duty	Heavy-duty	Heavy-duty
Differential Lock	Optional	Optional	Optional
Brakes	Dual dry caliper	Dual dry caliper	Dual dry caliper
Wheelbase	154" (3900 mm)	154" (3900 mm)	154" (3900 mm)
HYDRAULICS			
Hydraulic type	Closed Center Load Sensing System	Closed Center Load Sensing System	Closed Center Load Sensing System
High-flow hydraulic system	106 GPM (401 L/min)	106 GPM (401 L/min)	106 GPM (401 L/min)
Hydraulic remotes	6 standard	6 standard	6 standard
Maximum system pressure	2900 PSI (197 bar)	2900 PSI (197 bar)	2900 PSI (197 bar)
ELECTRICAL SYSTEM			
Alternator	12V - 200 amps	12V - 200 amps	12V - 200 amps
Batteries	3-12V, 950 CCA ea.	3-12V, 950 CCA ea.	3-12V, 950 CCA ea.
HID lighting / Power mirrors	Optional / Optional	Optional / Optional	Optional / Optional
Battery shut-off switch	Standard	Standard	Standard
DRAWBAR			
Hitch options	Miskin / Reynolds / K-Tec	Miskin / Reynolds / K-Tec	Miskin / Reynolds / K-Tec
Tow cable	Standard	Standard	Standard
TRACK			
30" 5500 series	Standard	Standard	Standard
30" 6500 series	Optional	Optional	Optional
CAB			
Volume	175.5 cu. ft. (4.97 cu. m)	175.5 cu. ft. (4.97 cu. m)	175.5 cu. ft. (4.97 cu. m)
Glass	85.9 sq. ft. (7.98 sq. m)	85.9 sq. ft. (8 sq. m)	85.9 sq. ft. (8 sq. m)
WEIGHTS			
Base tractor weight*	58,850 lb (26,694 kg)	58,850 lb (26,694 kg)	58,850 lb (26,694 kg)
Maximum operating weight	61,300 lb (27,805 kg)	61,300 lb (27,805 kg)	61,300 lb (27,805 kg)

*A base tractor is considered to have a standard drawbar, no fuel, no operator, no special added equipment and no ballast.

VERSATILE FINANCE

Now you can purchase or lease your tractor with competitive rates through Versatile Finance. Versatile has partnered with one of the foremost leaders in financial services to provide attractive interest rates and fast acceptance to get you the equipment you need when you need it. Ask your dealer about the credit options available with Versatile Finance.



©2014 Buhler Versatile Inc. All Rights Reserved » info@versatile-ag.com » www.versatile-ag.com
Ref: 09201415000 LM P/N 89002337

Illustrations, photographs and specifications in this brochure are based on the latest information at the time of publication. Design and specification of equipment is subject to change without notice; please contact your local dealer for product information and availability. Products produced by other manufacturers featured in photography are not endorsed by Buhler Versatile Inc. and are intended for image reference only.